

Railway tyre

Reprofiling process

Steps in the reprofiling process.

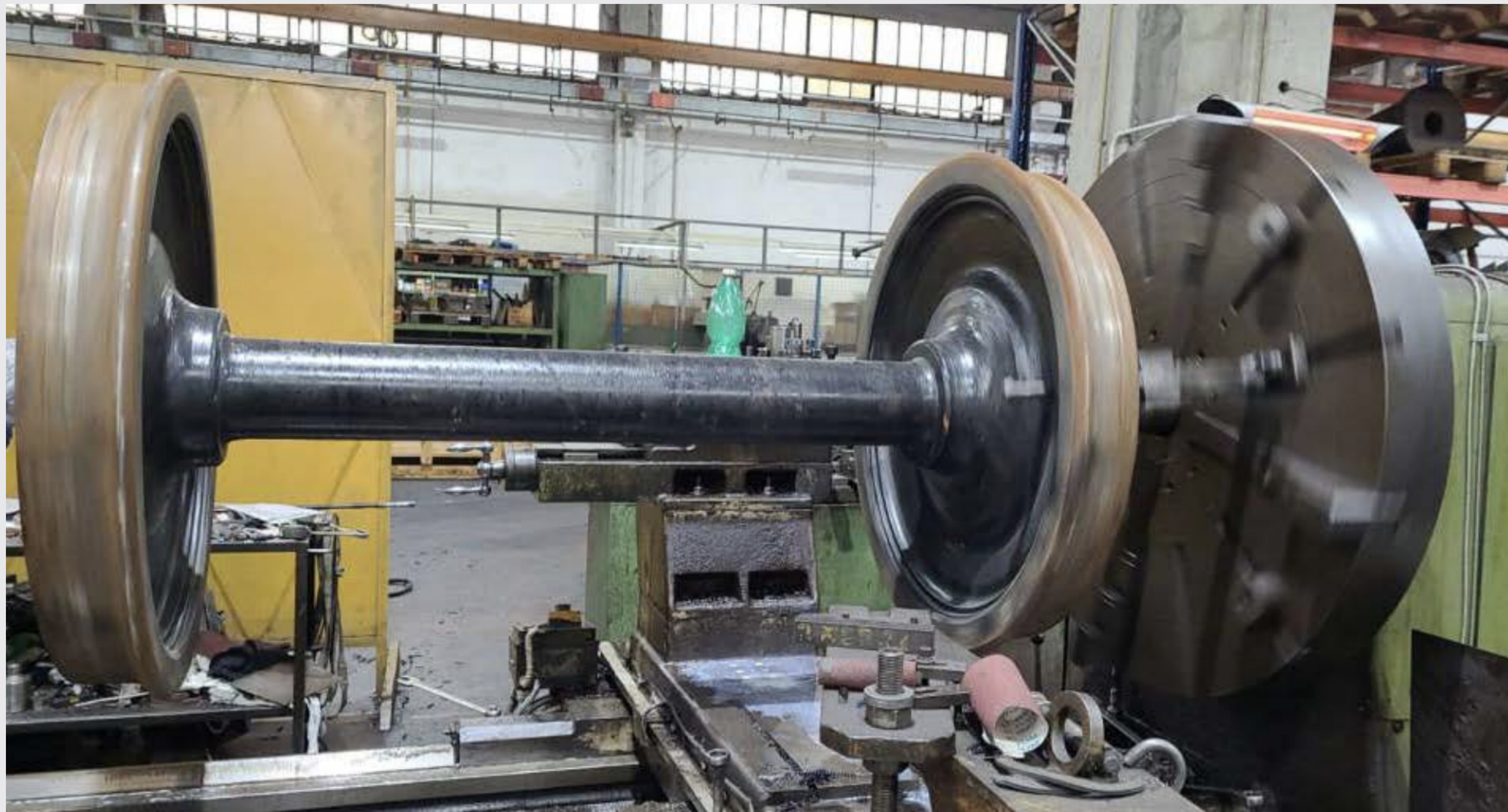
Ghibellina is able to carry out wheel dressing and reprofiling on any type of railway tyre, both for trams and locomotives.

All machining operations are carried out in compliance with the standards in force in Italy and Europe.

- 01 Removing safety rings
- 02 Scaling of tyres
- 03 Checking and grinding
- 04 Internal tyre turning
- 05 Calibrating and mounting
- 06 External tyre profiling
- 07 Wheelset testing
- 08 Finished product

Removing safety rings.

01

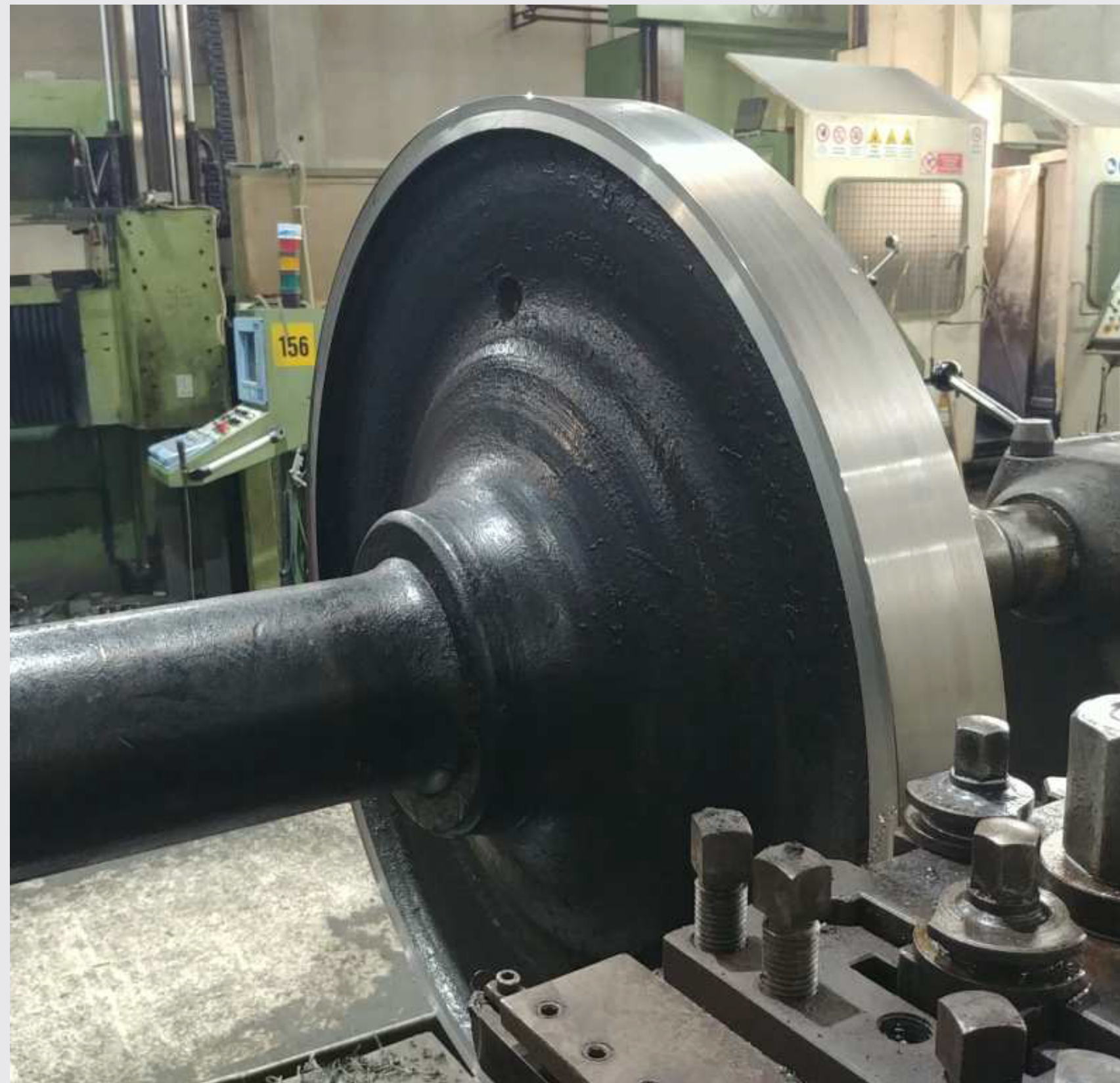


Scaling of tyres.



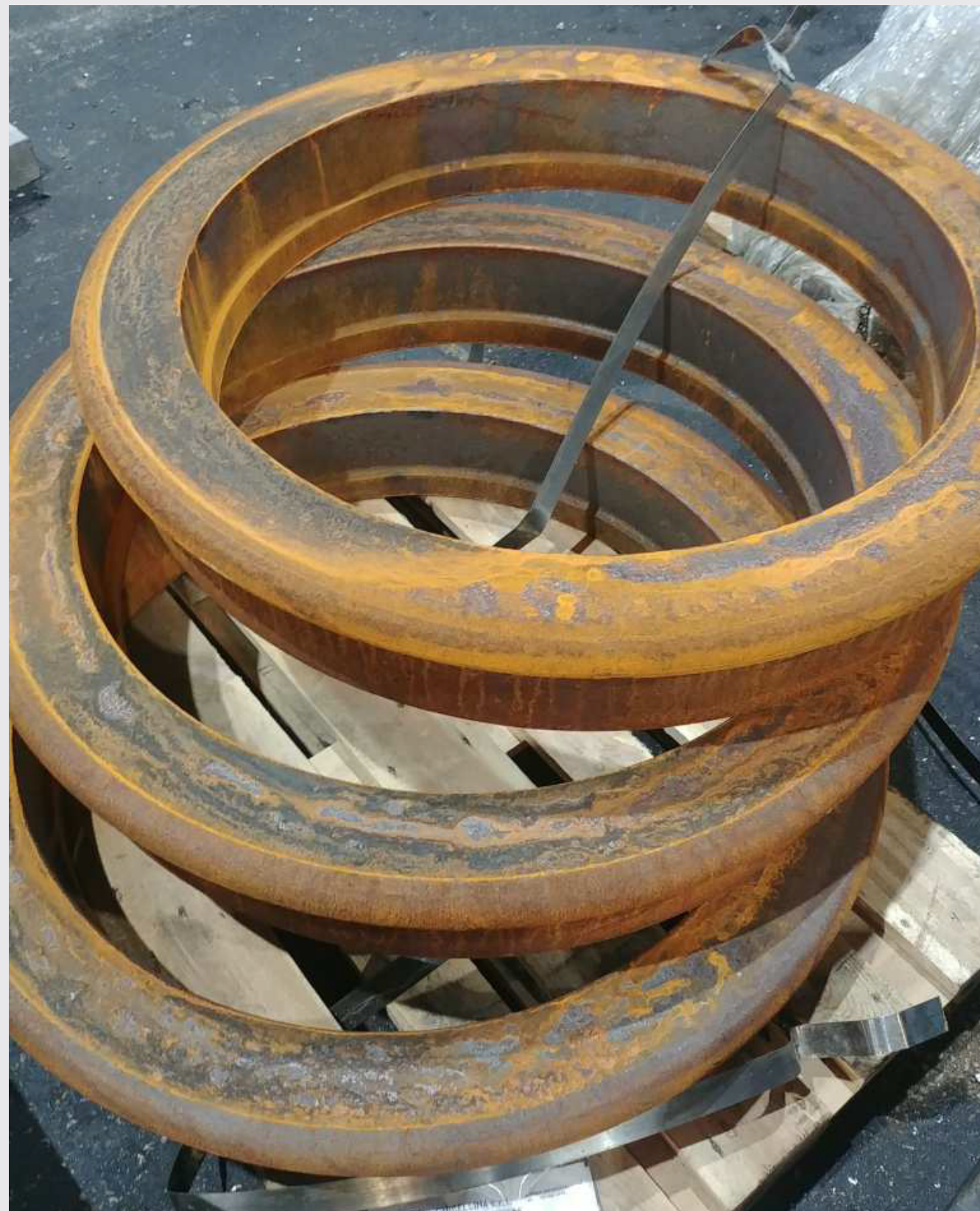
Checking and grinding wheel centre.

03



Internal tyre turning.

04



Calibrating tyres and mounting safety rings.

05



External tyre profiling according to drawing.



Wheelset testing.



Finished product.

