



# Railway tyre manufacturing process

---

## Trams e locomotives

---

Ghibellina is able to produce **any type of railway tyre**, both for trams and for locomotives.

All machining operations are carried out in compliance with the **standards** in force in Italy and Europe.



Nome articolo

**TYRE**

Code articolo

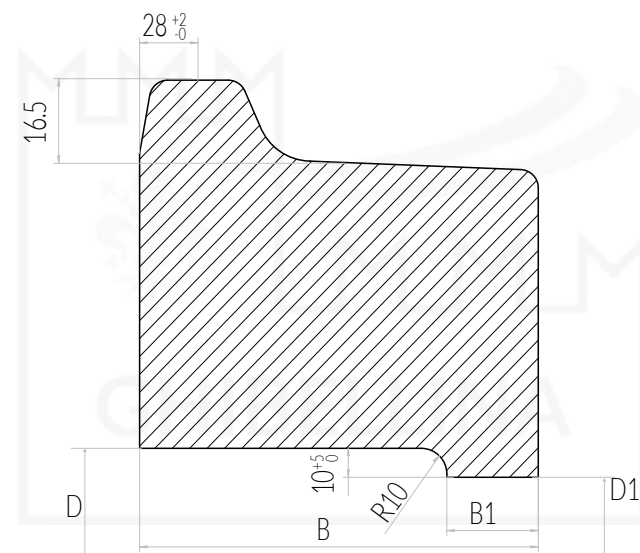
**A3.2.2**

www.ghibellina.it

www.ghibellina.it/en/

Assieme di riferimento

**Running gear**



Drawing available on request



NR	STANDARD	STEEL GRADE
1	PN-H-84027-6:1984	P54, P55A, P60
2	UIC 810 -1	B1 ÷ B6
3	BS 5892 cz.4/92 r.	B1 ÷ B7
4	GOST 398-2010	2
5	ASTM A 551 - 08	Class DHT

DIM. (mm)	D (mm) +8/-0	D1 (mm) +0/-10	B (mm) +3/-1	B1 (mm) +3/-0	WEIGHT (KG)
850	855	690	139	40	265
920	925	760	139	40	295
940	945	800	139	40	265
960	965	800	139	40	310
1000	1005	840	139	40	320
1040	1045	880	144	30	330
1100	1105	940	144	30	360
1250	1255	1090	144	30	415



The **steps** involved in the manufacturing process are as follows:

- 1. Selection and cutting of raw material**
- 2. Raw material heating**
- 3. Pressing and pre-drilling**
- 4. Rolling**
- 5. Cooling and heat treatment**
- 6. Quality control (raw product)**
- 7. Mechanical processing**
- 8. Quality control (finished product)**
- 9. Packaging**



# 1. Selection and cutting of raw material





## 2. Raw material heating





### 3. Pressing and pre-drilling





## 4. Rolling



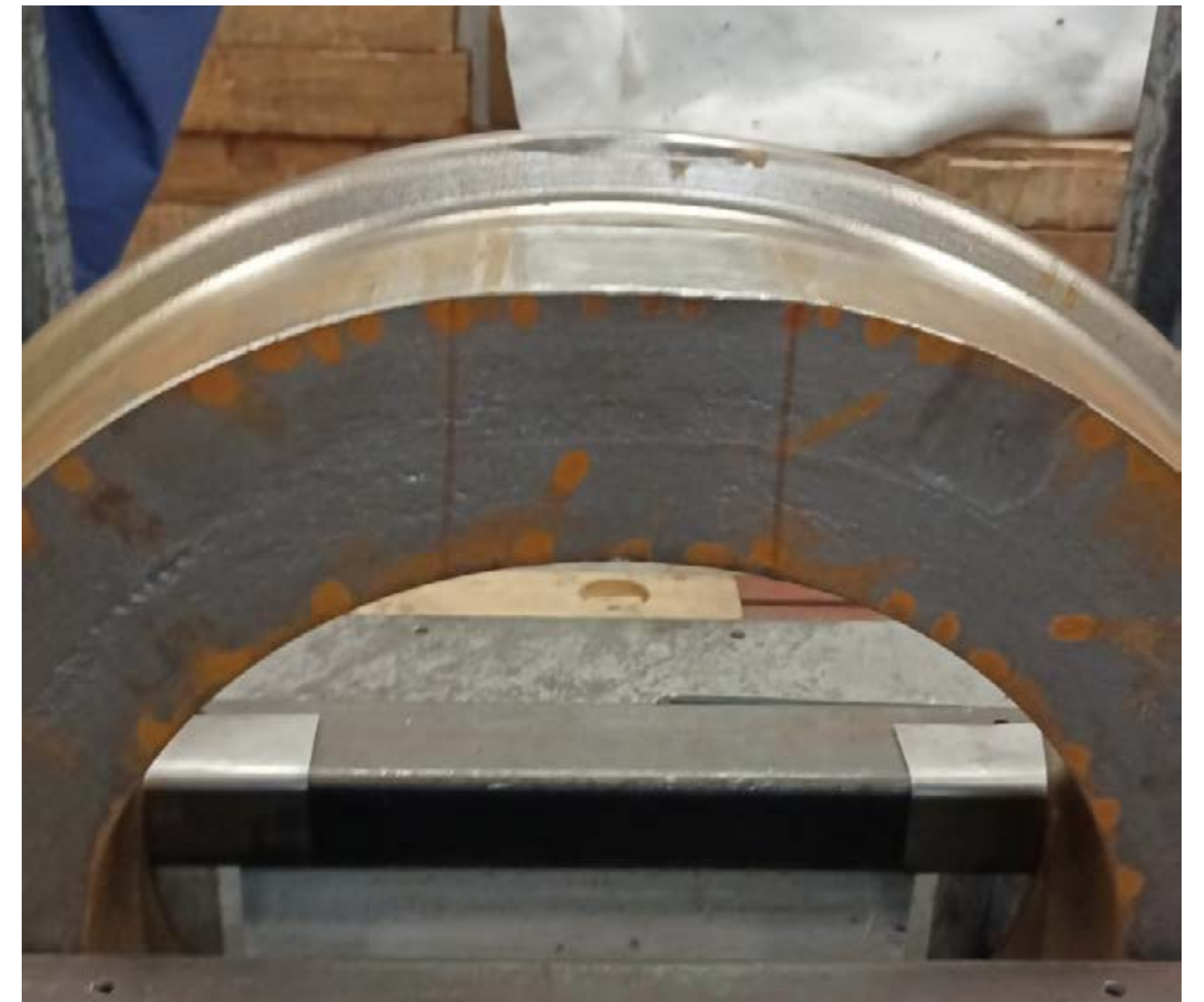


## 5. Cooling and heat treatment





## 6. Quality control (raw product)





## 7. Mechanical processing





## 8. Quality control (finished product)





## 9. Packaging

